


# EHS Power Audit Tool



**EHS Power™**  
EHS Web Compliance Assurance

[★ EHS Home Page](#)  
[★ On-Line Help](#)  
[★ Audit Resources](#)

Welcome to EHS Power. Use this Webpage to initiate a new audit by clicking any of the module links shown below; you may wish to pre-select a particular Organization from the list below to receive a screened version (as applicable) of the Master checklist. To resume a previously saved audit checklist, [click here](#).

[Environmental](#) | [Health & Safety](#) | [Miscellaneous](#)

Select Checklist by Organization:  Master  ASD  GEPC  O&M  PGS  Power Gen

<u><a href="#">Environmental</a></u>	<u><a href="#">Health &amp; Safety</a></u>
<u><a href="#">Air Quality</a></u>	<u><a href="#">Chemical Exposure</a></u>
<u><a href="#">Drinking Water</a></u>	<u><a href="#">Compressed Gas</a></u>
<u><a href="#">EHS Management Systems</a></u>	<u><a href="#">Confined Spaces</a></u>
<u><a href="#">Hazardous Materials</a></u>	<u><a href="#">Electrical Safety</a></u>
<u><a href="#">Hazardous Waste - Generators</a></u>	<u><a href="#">Fire Protection</a></u>
<u><a href="#">Hazardous Waste - TSEFs</a></u>	<u><a href="#">General Environmental Controls</a></u>
<u><a href="#">ISO 14001</a></u>	<u><a href="#">Handheld Tools</a></u>

<http://web1.geps.ge.com/ehs/assure/index.cfm>

# EHS Power Homepage

Mozilla - [EHS Power]

File Edit View Go Bookmarks Options Directory Window Help

Location: http://web1.gpc.gc.com/ehs/resources/index.cfm

**EHS Power**  
EHS Web Compliance Assurance

Welcome to EHS Power. Use this Webpage to initiate a new audit by clicking any of the master links shown below; you may wish to pre-select a particular Organization from the list below to receive a screened version (or application) of the Master checklist. To resume a previously saved audit checklist, [click here](#).

Environmental / Health & Safety / Master / ASD / OHS / OHS / OHS / OHS / OHS

**Environmental**

- [Air Quality](#)
- [Drinking Water](#)
- [EHS Management Systems](#)
- [Hazardous Materials](#)
- [Hazardous Waste - Generators](#)
- [Hazardous Waste - TSDs](#)
- [ISO 14001](#)

**Health & Safety**

- [Chemical Exposure](#)
- [Compressed Gas](#)
- [Confined Spaces](#)
- [Electrical Safety](#)
- [Fall Protection](#)
- [General Environmental Controls](#)
- [Handheld Tools](#)

Click for ASD General Environmental Controls Checklist

Link to On-line help and Audit Resources

Link to Resume Existing Audit

Select a Master or a pre-screened checklist for your organization (cookie to remember your org!)

Individual checklists links

# EHS Power - Checklist Page

File Edit View Go Bookmarks Options Directory Window Help

Go Back Forward Home Reload Stop Stop Reload Print Print Preview Print

Location: <http://web1.gpa.gov.com/ehs/assess/Scorecard>

### Air Quality Scorecard

[Introduction](#) [Expansion](#) [Background & Audit Guidelines](#) [Info/Help](#)

[General Permitting](#) [New Source Performance Standards \(NSPS\)](#) [New Source Air Pollution \(NSAP\)](#) [Compliance of Significant Source Reduction \(SSR\) and New Source Review \(NSR\)](#) [More General Requirements](#) [Practical Air Monitoring Issues - Fueling, Impingement, Sampling, or Destroying CFCs](#) [Provision of Strategic Air Issues, Applications and NSR/SSR](#) [Combining CFCs](#) [Self-Inspection](#) [Accidental Release Prevention, Risk Management Plan \(ARMP\)](#)

Site location:  Audit type(s):

Suttlings:

#### 1.0 General

1.1 Noncompliance issues from previous audits of air emissions should be resolved.  
Date:

Not Applicable  Compliant  Non-Compliant  Under Evaluation

UPDATE AND SAVE MORE SCORES REPORT FLAGGED HELP ONLINE

Document Done

Audit Resources for this checklist - Introduction, Rulebook and Regulations (in pop up windows)

Jumps to Sections within this checklist

Audit related information

Toolbar for checklist functions

# EHS Power - Answering A Question

Popup window with Guide notes

The screenshot shows a web browser window displaying a question in the EHS Power system. The question text is partially visible: "2.3 The site owner may have controlling requirements, operating condition limits or emission limits. Some control limits are based on permits, which define controlled air state air quality regulations regardless of permit conditions." Below the question, there are several radio button options for the answer status: "Not Applicable", "Compliant", "Non-Compliant", "Under Evaluation", and "Answer Status". The "Answer Status" dropdown menu is currently set to "Select". Below the options is a large text area for recording findings, with a "Scroll to top of next question" link. At the bottom of the form, there are buttons for "BACK REPORT", "EXPORT FLAGGED", and "HELP ONLINE".

Question Status box:

?Select - current qn

Done - question answered

Flag - Noncompliance answer

? - Under evaluation

Text box (unlimited) to record findings, etc.

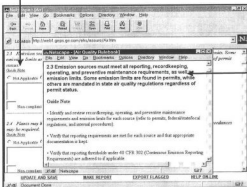
Audit related information

Answer options

Link to scroll to next qn

# EHS Power - Guide Note Window

Popup window for Guide notes

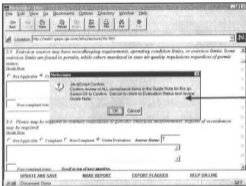


Guide note specific to this question - every compliance item must be reviewed and status evaluated

Tips:

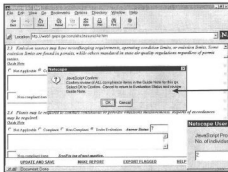
- You can keep the popup window open at all times (till done) - just click back on the Checklist window
- Use Block Select (using the mouse), Copy and Paste to place text in the finding input box

# EHS Power - Answer Options

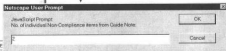


Answer = "Not Applicable" or "Compliant" or "Noncompliant"  
- You must confirm that compliance status has been evaluated in accordance with ALL Guide Note requirements.  
OR Cancel and Return to Evaluation Status

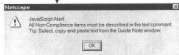
# EHS Power - Answer Options - Noncompliant



Confirm Complete Evaluation  
of all Guide Note items



Result:



# EHS Power - Save and Update

1.0 Permitting

2.1 State and/or local regulations may require construction and/or operating permits for pipes and computer systems and for emission control devices.

Date Expiration: None

Status: Compliant

Compliant with all requirements

1.1 Permit applications and permits should reflect actual equipment conditions.

Date Expiration: None

Status: Compliant

UPDATE AND SAVE ← MAKE REPORT EXPORT RESULTS HELP ON-LINE

Tip: Save and Update before Making a Report!

Toolbar to Save, Make Report and Help on-line

First Time Save - provide Password to secure your answered checklist!

Netscape User Prompt

JavaScript Prompt

Please enter a Score sheet password (no single quotes)

Examplepwd

OK

Cancel



# EHS Power - Audit Findings Bookmark Page

**EHS Power™**  
**Air Quality Audit Findings Bookmark**

[EHS Power Home Page](#) | [EHS Power Contact Info](#) | [EHS Power Home Page](#)

**Audit:** [Example site 1/28/01](#)

**Audit team:** Person A, Person B, etc.

**Findings last updated:** January 28, 2001 01:58 PM

**Current Audit Findings Status:**

Audit Questions	Not Applicable	Compliant	Non-Compliant	Total Evaluation
200	0	1	2 non-compliance items <a href="#">Export to EHS Audit</a>	201

Note: Use the Storage (S), Save As... command to save this Web page as [Web files](#) to access the audit findings at any later time. Please do NOT use the Navigation Bookmarks feature to bookmark the current Webpage directly.

Document Close 104 F

Link to Resume Audit

Audit Results Summary

Export Findings to Audit Tracking System on the Web

Tip: Use File Save As to save this file to \*.htm to reload later or use the Resume Existing Audit link from the Homepage